

Streets & Traffic Signage

Bennington's character has long been affected by traffic issues. Besides the actual flow of vehicles, these issues include the materials, placement and dimensions of streets, and the design of traffic signage and lighting. The center of Bennington has always been a place where major roads converge, and through which substantial traffic flows. While this adds a sense of activity and vitality, it also creates a strong contrast between vehicular and pedestrian areas. Successfully resolving this contrast is important to enhancing Bennington's character.

Basic Guidelines

All government agencies and private parties dealing with street dimension and materials, route signage, traffic signals, street lighting and other related features should respect the historic character of central Bennington. It is not appropriate to widen existing historic streets, or to install overhead signage, obtrusive new street lighting or traffic signals, or similar features which conflict with the historic character and scale of central Bennington.

Appropriate

- A** Designing traffic signage using colors, typefaces, materials and other details which are compatible with historic character.
- B** Reducing the scale and changing the overhead location of existing obtrusive traffic signage.
- C** Changing pavement to more traditional, pedestrian-scale materials such as brick or stone in locations with prominent historic character.
- D** Maintaining existing street and sidewalk widths with no reduction of pedestrian space.

Not Appropriate

- 1** Installing signage and traffic signals of inappropriately large scale or in obtrusive or overhead locations.
- 2** Using signage designs with colors, typefaces, materials or other details which conflict with historic character.
- 3** Widening streets to increase vehicular traffic flow.



Fig. 5-102: New signage system.



Fig. 5-103: New signage system.

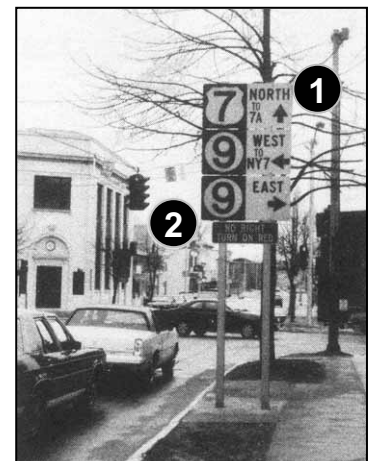


Fig. 5-104: [Date Unknown]